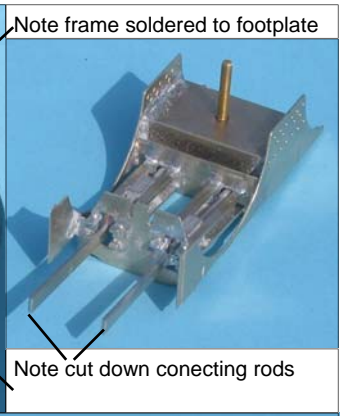
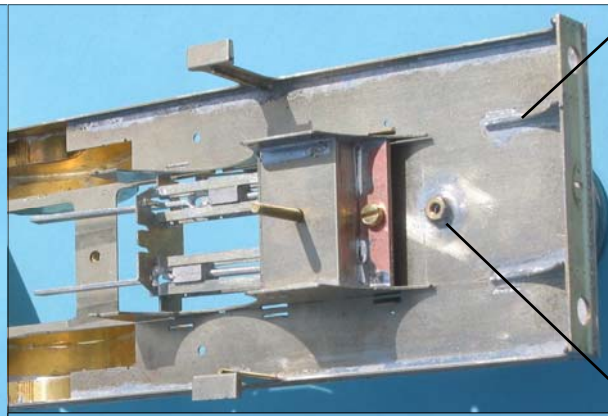
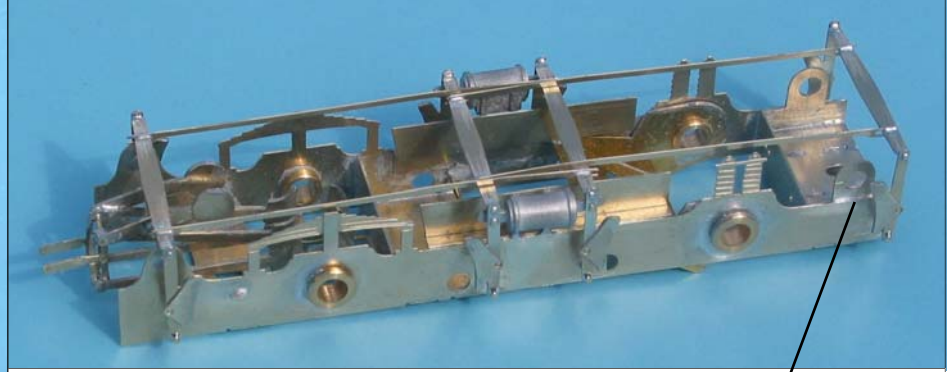


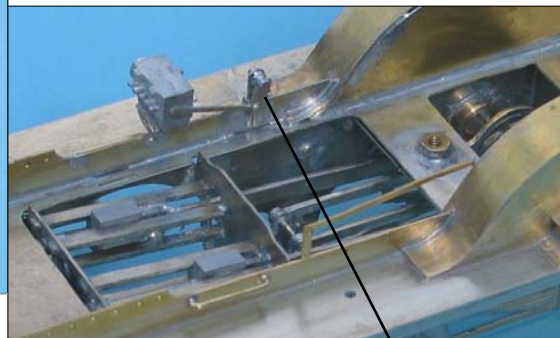
Chassis sections assembled onto footplate, note PCB strip front fixing



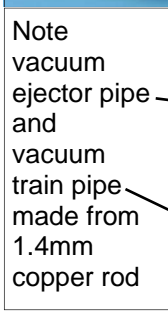
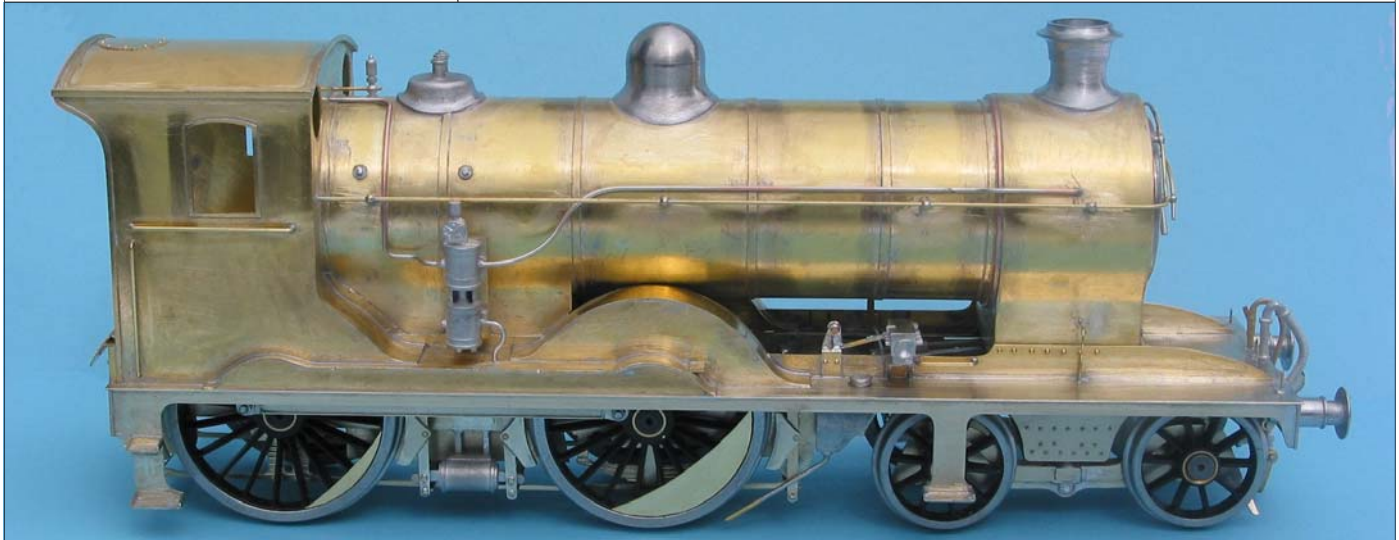
Note frame soldered to footplate
Note cut down connecting rods



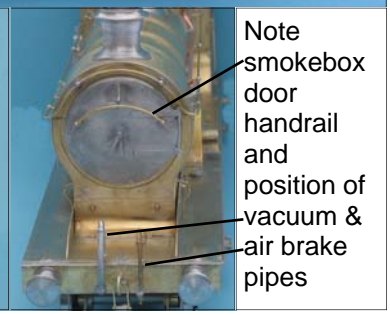
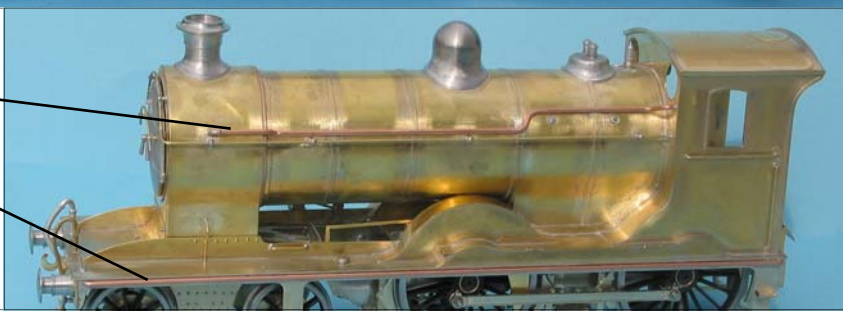
Note valve gear & plates cut from scrap etch to carry pickups for rear wheels



Lubricator drive, note 1.4mm copper rod and cut down base of cast lubricator



Note vacuum ejector pipe and vacuum train pipe made from 1.4mm copper rod



Note smokebox door handrail and position of vacuum & air brake pipes



LNER Class D32

Finished in 1930's apple green livery. Numbered and Lettered using HMRS Transfers (sheet No 4). Hand lined with bow pen.

Model was built by myself and painted by Ian Rathbone.

www.ianrathbonemodelpainting.co.uk